

3" Core Materials - Tamper-Indicating

Tamper-, Temperature- and Water-Indicating Materials

Tamper-indicating labels are high quality labels to protect against counterfeiting, diversion and tampering. Brady offers an assortment of standard and custom engineered indicating labels to meet your particular product protection needs. These tamper seals and tamper-indicating labels provide irreversible, visible evidence of tampering to protect against warranty fraud, product tampering, alteration, and misuse or asset theft. Tamper-indicating labels can protect your product's unique model and serial number as well as help reduce the chance of liability issues due to unauthorized service or misuse.

Printer Compatibility

The following pages contain 3" core label rolls that are designed for use in these printers unless otherwise noted.



NEW BradyPrinter i5100 and legacy IP™ Printer



NEW BradyPrinter i7100 and legacy PR PLUS printer

How to Read a THT Catalog Number

Many Brady label parts follow a naming convention that includes specific information about the label. The following example shows how it can be broken down:

THT – 59 – 351 – 10

Technology:
Thermal Transfer

Die Size:
#5 die
1" x 0.5"

Material:
B-351
Destructible Vinyl

Quantity:
Multiply by 1,000
10 x 1,000 = 10,000

Material	Print Technology	Color	Finish	Adhesive	Thickness	UL	CSA	RoHS	Applications
B-335 (Custom)	Thermal Transfer	Clear	Gloss	Footprinting	2.8 mils				Tamper-evident footprinting without exposing adhesive or residue.
B-351	Thermal Transfer	White	Matte	Fractures upon removal	2.8 mils				Material fractures to show signs of product tampering and prevent one-piece label removal.
B-362	Thermal Transfer	Silver metallic	Matte	Fractures upon removal	2.5 mils	X		X	Rating and serial plates that require high performance and resistance to product tampering.
B-366 (Custom)	Thermal Transfer	Clear	Gloss	Removable	4.0 mils				Tamper-evident label that removes cleanly from products and packaging.
B-438	Thermal Transfer	Silver metallic	Matte	Checkerboard footprint	3.3 mils	X		X	Rating and serial plates that require high performance and evidence of label removal.
B-7546	Thermal Transfer	White	Gloss	VOID footprint and pattern on label upon removal	3.2 mils			X	Designed for application such as rating and serial plates that require both high performance and protection against removal.
B-7566	Thermal Transfer	Clear	Gloss	VOID footprint and pattern on label upon removal	2.5 mils			X	Applications that require high performance and evidence of label removal.
B-7576	Thermal Transfer	Silver metallic	Matte	VOID footprint and pattern on label upon removal	2.8 mils	X		X	Rating and serial plates that require high performance and evidence of label removal.
B-7511	Non-Printable	Multi	Gloss	Permanent	15.7 mils			X	Temperature-indicating labels for permanent record of the highest temperature reached. Temperature range covered is 99°F to 289°F (37°C to 143°C).
B-7518	Non-Printable	Multi	Gloss	Permanent	8.7 mils			X	Reversible temperature-indicating labels that change in color at designated temperatures. Temperature range covered is 32°F to 212°F (0°C to 100°C).
B-350	Non-Printable	White		Permanent	10.2 mils	X			Water-indicating laminate labels are designed for use in locations where clear evidence of water intrusion is needed.

3" Core Materials - Tamper-Indicating

B-351 Destructible Vinyl Material

Color: White **Finish:** Matte

White vinyl material with matte finish and permanent adhesive. Tamper-evident material fractures to show signs of product tampering and prevent one-piece label removal. Use caution when removing from liner as material is fragile. Ideal for rating and serial plates.

Performance Attributes:

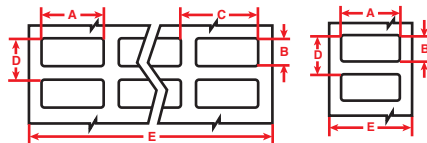


Figure 1

Figure 2



Diagram	Catalog #	Material	Color	Label Width A Inch (mm)	Label Height B Inch (mm)	Horiz. Repeat C Inch (mm)	Vert. Repeat D Inch (mm)	Web Width E Inch (mm)	Labels Per Row	Labels Per Pkg	Rec. Ribbon
Fig. 1	THT-12-351-10	Vinyl	White	0.500 (12.7)	0.437 (11.1)	0.662 (16.8)	0.537 (13.6)	3.350 (85.1)	5	10,000	R6207
Fig. 1	THT-14-351-10	Vinyl	White	0.650 (16.5)	0.200 (5.1)	0.700 (17.8)	0.300 (7.6)	2.950 (74.9)	4	10,000	R6202
Fig. 1	THT-1-351-10	Vinyl	White	0.750 (19.1)	0.250 (6.4)	0.800 (20.3)	0.350 (8.9)	3.350 (85.1)	4	10,000	R6207
Fig. 1	THT-5-351-10	Vinyl	White	1.000 (25.4)	0.500 (12.7)	1.075 (27.3)	0.600 (15.2)	3.350 (85.1)	3	10,000	R6207
Fig. 2	THT-59-351-10	Vinyl	White	1.000 (25.4)	0.500 (12.7)	-	0.600 (15.2)	1.200 (30.5)	1	10,000	R6206
Fig. 1	THT-37-351-10	Vinyl	White	1.500 (38.1)	0.500 (12.7)	1.650 (41.9)	0.600 (15.2)	3.350 (85.1)	2	10,000	R6207
Fig. 1	THT-4-351-10	Vinyl	White	1.500 (38.1)	0.250 (6.4)	1.650 (41.9)	0.350 (8.9)	3.350 (85.1)	2	10,000	R6207
Fig. 1	THT-6-351-10	Vinyl	White	1.500 (38.1)	0.750 (19.1)	1.650 (41.9)	0.875 (22.2)	3.350 (85.1)	2	10,000	R6207
Fig. 2	THT-15-351-2.5	Vinyl	White	2.000 (50.8)	0.250 (6.4)	-	0.375 (9.5)	2.200 (55.9)	1	2,500	R6200
Fig. 2	THT-17-351-3	Vinyl	White	2.000 (50.8)	1.000 (25.4)	-	1.125 (28.6)	2.200 (55.9)	1	3,000	R6200
Fig. 2	THT-53-351-3	Vinyl	White	2.000 (50.8)	0.500 (12.7)	-	0.600 (15.2)	2.200 (55.9)	1	3,000	R6200
Fig. 2	THT-18-351-3	Vinyl	White	3.000 (76.2)	1.000 (25.4)	-	1.125 (28.6)	3.200 (81.3)	1	3,000	R6202
Fig. 2	THT-19-351-1	Vinyl	White	3.000 (76.2)	2.000 (50.8)	-	2.125 (54.0)	3.200 (81.3)	1	1,000	R6202

B-362 Destructible Vinyl Material

Color: Silver **Finish:** Gloss

Metallized vinyl material with gloss finish and permanent adhesive. Tamper-evident material fractures to show signs of product tampering and prevent one-piece label removal. Use caution when removing from liner as material is fragile. Ideal rating and serial plates.

Performance Attributes:

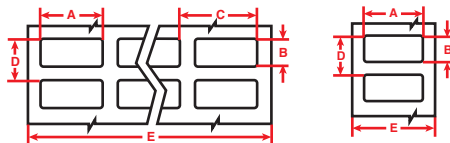


Figure 1

Figure 2



Diagram	Catalog #	Material	Color	Label Width A Inch (mm)	Label Height B Inch (mm)	Horiz. Repeat C Inch (mm)	Vert. Repeat D Inch (mm)	Web Width E Inch (mm)	Labels Per Row	Labels Per Pkg	Rec. Ribbon
Fig. 1	THT-5-362-10	Vinyl	Silver	1.000 (25.4)	0.500 (12.7)	1.075 (27.3)	0.600 (15.2)	3.350 (85.1)	3	10,000	R6007
Fig. 2	THT-59-362-10	Vinyl	Silver	1.000 (25.4)	0.500 (12.7)	-	0.600 (15.2)	1.200 (30.5)	1	10,000	R6006
Fig. 1	THT-37-362-10	Vinyl	Silver	1.500 (38.1)	0.500 (12.7)	1.650 (41.9)	0.600 (15.2)	3.350 (85.1)	2	10,000	R6007
Fig. 1	THT-6-362-10	Vinyl	Silver	1.500 (38.1)	0.750 (19.1)	1.650 (41.9)	0.875 (22.2)	3.350 (85.1)	2	10,000	R6007
Fig. 2	THT-17-362-3	Vinyl	Silver	2.000 (50.8)	1.000 (25.4)	-	1.125 (28.6)	2.200 (55.9)	1	3,000	R6000
Fig. 2	THT-53-362-3	Vinyl	Silver	2.000 (50.8)	0.500 (12.7)	-	0.600 (15.2)	2.200 (55.9)	1	3,000	R6000
Fig. 2	THT-7-362-3	Vinyl	Silver	2.750 (69.9)	1.250 (31.8)	-	1.375 (34.9)	2.950 (74.9)	1	3,000	R6002
Fig. 2	THT-19-362-1	Vinyl	Silver	3.000 (76.2)	2.000 (50.8)	-	2.125 (54.0)	3.200 (81.3)	1	1,000	R6002

3" Core Materials - Tamper-Indicating

B-438 Checkerboard Footprint Polyester Material

Color: Silver Finish: Matte

Metallized polyester label with matte finish. Leaves a checkerboard footprint on the surface when removed; the pattern also appears on the top of the label to prevent it from being reused. Applications include rating and serial plates or any other application where evidence of label removal is desired.

Performance Attributes: 

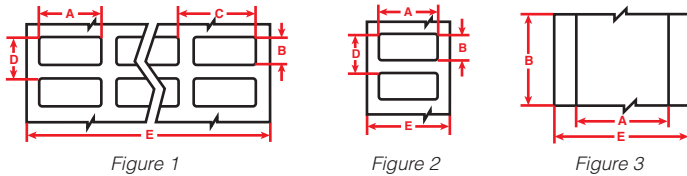


Diagram	Catalog #	Material	Color	Label Width A Inch (mm)	Label Height B Inch (mm)	Horiz. Repeat C Inch (mm)	Vert. Repeat D Inch (mm)	Web Width E Inch (mm)	Labels Per Row	Labels Per Pkg	Rec. Ribbon
Fig. 1	THT-12-438-10	Polyester	Silver	0.500 (12.7)	0.437 (11.1)	0.662 (16.8)	0.537 (13.6)	3.350 (85.1)	5	10,000	R4307
Fig. 1	THT-14-438-10	Polyester	Silver	0.650 (16.5)	0.200 (5.1)	0.700 (17.8)	0.300 (7.6)	2.950 (74.9)	4	10,000	R4300
Fig. 1	THT-1-438-10	Polyester	Silver	0.750 (19.1)	0.250 (6.4)	0.800 (20.3)	0.350 (8.9)	3.350 (85.1)	4	10,000	R4307
Fig. 1	THT-5-438-10	Polyester	Silver	1.000 (25.4)	0.500 (12.7)	1.075 (27.3)	0.600 (15.2)	3.350 (85.1)	3	10,000	R4307
Fig. 1	THT-37-438-10	Polyester	Silver	1.500 (38.1)	0.500 (12.7)	1.650 (41.9)	0.600 (15.2)	3.350 (85.1)	2	10,000	R4307
Fig. 1	THT-6-438-10	Polyester	Silver	1.500 (38.1)	0.750 (19.1)	1.650 (41.9)	0.875 (22.2)	3.350 (85.1)	2	10,000	R4307
Fig. 2	THT-17-438-3	Polyester	Silver	2.000 (50.8)	1.000 (25.4)	-	1.125 (28.6)	2.200 (55.9)	1	3,000	R4302
Fig. 2	THT-53-438-3	Polyester	Silver	2.000 (50.8)	0.500 (12.7)	-	0.600 (15.2)	2.200 (55.9)	1	3,000	R4302
Fig. 2	THT-7-438-3	Polyester	Silver	2.750 (69.9)	1.250 (31.8)	-	1.375 (34.9)	2.950 (74.9)	1	3,000	R4300
Fig. 2	THT-18-438-3	Polyester	Silver	3.000 (76.2)	1.000 (25.4)	-	1.125 (28.6)	3.200 (81.3)	1	3,000	R4300
Fig. 2	THT-19-438-1	Polyester	Silver	3.000 (76.2)	2.000 (50.8)	-	2.125 (54.0)	3.200 (81.3)	1	1,000	R4300
Fig. 3	THT-21-438	Polyester	Silver	3.000 (76.2)	300 ft. (91.4 m)	-	300 ft. (91.4 m)	3.200 (81.3)	1	1 Roll Cont.	R4300

3" Core Materials

Tamper-Indicating

Custom Label Materials

B-335 VOID Footprint Polyester Material

B-335 is a super clear tamper-indicating label material that leaves a dry footprint (no sticky residue) when the label is removed. Upon attempted removal, the material layers split showing a hologram and VOID wallpaper pattern. In addition, the label cannot be stuck back down or reused. This non-typical tamper label material is ideal for an assortment of business issues where visible evidence of product opening or tampering is required.



B-366 Polypropylene

B-366 polypropylene material features diamonds with a clean removability coating that prevents any footprint or residue from being left behind. It's ideal for an improved consumer experience when opening a package or preserving package integrity for reuse when repackaging or inspecting a packaged product is required.



Contact Brady for more information about these custom materials.

3" Core Materials - Tamper-Indicating

B-7546 VOID Footprint Polyester Material

Color: White **Finish: Gloss**

White polyester tamper-indicating material with glossy finish. Leaves a "VOID" footprint when label is removed to prevent it from being reused. The adhesive does not allow for repositioning and requires minimal handling in order to prevent a premature "VOID" pattern.

Performance Attributes: 

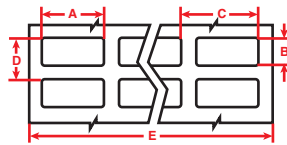


Figure 1

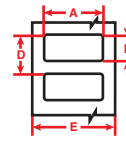


Figure 2

Diagram	Catalog #	Material	Color	Label Width A Inch (mm)	Label Height B Inch (mm)	Horiz. Repeat C Inch (mm)	Vert. Repeat D Inch (mm)	Web Width E Inch (mm)	Labels Per Row	Labels Per Pkg	Rec. Ribbon
Fig. 1	THT-5-7546-10	Polyester	White	1.000 (25.4)	0.500 (12.7)	1.075 (27.3)	0.600 (15.2)	3.350 (85.1)	3	10,000	R6007
Fig. 2	THT-59-7546-10	Polyester	White	1.000 (25.4)	0.500 (12.7)	-	0.600 (15.2)	1.200 (30.5)	1	10,000	R6006
Fig. 1	THT-37-7546-10	Polyester	White	1.500 (38.1)	0.500 (12.7)	1.650 (41.9)	0.600 (15.2)	3.350 (85.1)	2	10,000	R6007
Fig. 1	THT-6-7546-10	Polyester	White	1.500 (38.1)	0.750 (19.1)	1.650 (41.9)	0.875 (22.2)	3.350 (85.1)	2	10,000	R6007
Fig. 2	THT-53-7546-3	Polyester	White	2.000 (50.8)	0.500 (12.7)	-	0.600 (15.2)	2.200 (55.9)	1	3,000	R6000
Fig. 2	THT-17-7546-3	Polyester	White	2.000 (50.8)	1.000 (25.4)	-	1.125 (28.6)	2.200 (55.9)	1	3,000	R6000
Fig. 2	THT-7-7546-3	Polyester	White	2.750 (69.9)	1.250 (31.8)	-	1.375 (34.9)	2.950 (74.9)	1	3,000	R6002
Fig. 2	THT-18-7546-3	Polyester	White	3.000 (76.2)	1.000 (25.4)	-	1.125 (28.6)	3.200 (81.3)	1	3,000	R6002
Fig. 2	THT-19-7546-1	Polyester	White	3.000 (76.2)	2.000 (50.8)	-	2.125 (54.0)	3.200 (81.3)	1	1,000	R6002

B-7566 VOID Footprint Clear Polyester Material

Color: Clear **Finish: Gloss**

A clear polyester tamper-indicating material with a glossy finish, used for any application requiring high performance with evidence of label removal. Designed to leave a "VOID" footprint when the label is removed. A "VOID" pattern will appear on the top surface of the label to prevent reuse. The adhesive nature of this product does not allow for repositioning and requires minimal handling in order to prevent prematurely exposed VOID pattern.

Performance Attributes: 

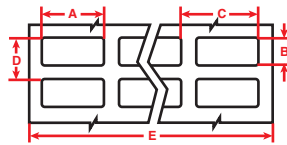
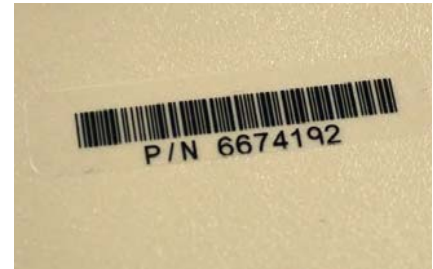


Figure 1

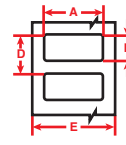


Figure 2

Diagram	Catalog #	Material	Color	Label Width A Inch (mm)	Label Height B Inch (mm)	Labels Per Row	Labels Per Pkg	Rec. Ribbon
Fig. 1	THT-149-7566-10	Polyester	Clear	0.500 (12.7)	0.500 (12.7)	4	10,000	R4400, R6000
Fig. 1	THT-39-7566-10	Polyester	Clear	1.000 (25.4)	0.500 (12.7)	3	10,000	R4400, R6000
Fig. 1	THT-147-7566-10	Polyester	Clear	1.500 (38.1)	0.375 (9.5)	2	10,000	R4400, R6000
Fig. 2	THT-17-7566-3	Polyester	Clear	2.000 (50.8)	1.000 (25.4)	1	3,000	R4400, R6000
Fig. 2	THT-7-7566-3	Polyester	Clear	2.750 (69.9)	1.250 (31.8)	1	3,000	R4400, R6000
Fig. 2	THT-18-7566-3	Polyester	Clear	3.000 (76.2)	1.000 (25.4)	1	3,000	R4400, R6000

3" Core Materials - Tamper-Indicating

B-7576 VOID Footprint Metallized Polyester Material

Color: Silver Finish: Matte

A metallized polyester tamper-indicating material with a matte finish that is designed to leave a "VOID" footprint when the label is removed. A "VOID" pattern will appear on the top surface of the label to prevent reuse. The adhesive nature of this product does not allow for repositioning and requires minimal handling in order to prevent prematurely exposed VOID pattern.

Performance Attributes: 

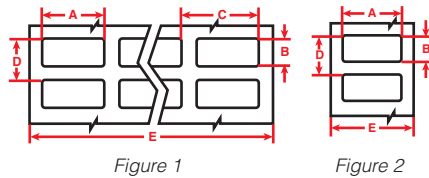


Diagram	Catalog #	Material	Color	Label Width A Inch (mm)	Label Height B Inch (mm)	Labels Per Row	Labels Per Pkg	Rec. Ribbon
Fig. 1	THT-5-7576-10	Metallized Polyester	Silver	1.000 (25.4)	0.500 (12.7)	3	10,000	R4400, R6000
Fig. 2	THT-59-7576-10	Metallized Polyester	Silver	1.000 (25.4)	0.500 (12.7)	1	10,000	R4400, R6000
Fig. 1	THT-37-7576-10	Metallized Polyester	Silver	1.500 (38.1)	0.500 (12.7)	2	10,000	R4400, R6000
Fig. 1	THT-6-7576-10	Metallized Polyester	Silver	1.500 (38.1)	0.750 (19.1)	2	10,000	R4400, R6000
Fig. 2	THT-53-7576-3	Metallized Polyester	Silver	2.000 (50.8)	0.500 (12.7)	1	3,000	R4400, R6000
Fig. 2	THT-17-7576-3	Metallized Polyester	Silver	2.000 (50.8)	1.000 (25.4)	1	3,000	R4400, R6000
Fig. 2	THT-7-7576-3	Metallized Polyester	Silver	2.750 (69.9)	1.250 (31.8)	1	3,000	R4400, R6000
Fig. 2	THT-18-7576-3	Metallized Polyester	Silver	3.000 (76.2)	1.000 (25.4)	1	3,000	R4400, R6000
Fig. 2	THT-19-7576-1	Metallized Polyester	Silver	3.000 (76.2)	2.000 (50.8)	1	1,000	R4400, R6000

3" Core Materials

Tamper-Indicating

B-350 Water-Indicating Paper Labels

Printable water-indicating laminate labels for thermal transfer printers are designed for use in locations where clear evidence of water intrusion is needed.

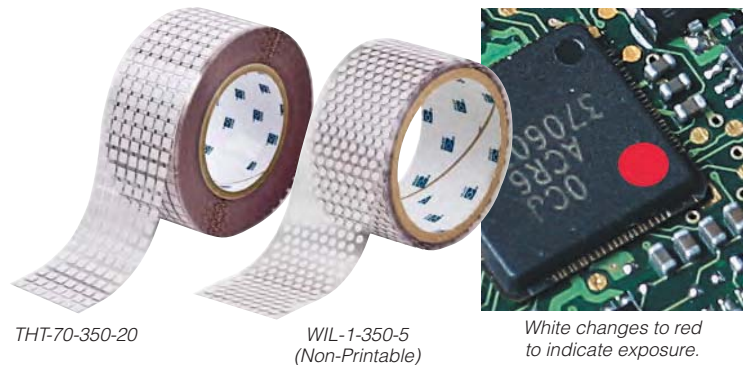
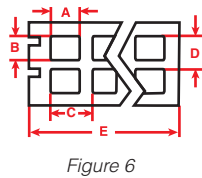


Diagram	Catalog #	Material	Color	Label Width A Inch (mm)	Label Height B Inch (mm)	Labels Per Row	Labels Per Pkg	Rec. Ribbon
Fig. 6	THT-70-350-20	Paper	White Changes to Red	0.250 (6.35)	0.250 (6.4)	7	20,000	R4400, R4900
Non-Printable Water-Indicating Markers								
-	WIL-1-350-5	Paper	White Changes to Red	0.160 (4.10) Dia.	-	-	5,000	Non-Printable
-	WIL-1-350-20	Paper	White Changes to Red	0.160 (4.10) Dia.	-	-	20,000	Non-Printable

3" Core Materials - Temperature-Indicating

B-7511 Permanent Temperature-Indicating Labels

Pre-printed labels designed to document the temperature levels that a piece of equipment reaches during operation. When equipment reaches a certain temperature, the white area of label serves as a heat sensor and turns irreversibly black. The label acts as a permanent temperature recording, giving clear proof of the highest temperature attained for that piece of equipment.

Performance Attributes: 



TIL-1Dia



TIL-1



TIL-4



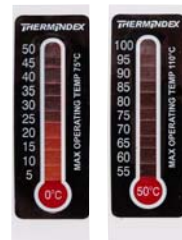
TIL-6

The following parts are available as pre-printed only.

Diagram	Catalog #	Description	Shape	Material	Color	Label Width Inch (mm)	Label Height Inch (mm)	Labels Per Card	Labels Per Pkg
TIL-1-Dia	TIL-1-60C/140F-DIA	1-Level Single, 60°C	Circular	Polyester	Blue/White	0.512 (13.0) dia.	-	15	60
TIL-1-Dia	TIL-1-71C/160F-DIA	1-Level Single, 71°C	Circular	Polyester	Blue/White	0.512 (13.0) dia.	-	15	60
TIL-1-Dia	TIL-1-82C/180F-DIA	1-Level Single, 82°C	Circular	Polyester	Blue/White	0.512 (13.0) dia.	-	15	60
TIL-1	TIL-1-82C/180F	1-Level Maintenance, 82°C	Square	Polyester	Blue/White	0.787 (19.9)	0.787 (19.9)	10	60
TIL-4	TIL-4-82C/180F	4-Level-Label, 82/93/104/116°C	Rectangular	Polyester	Blue/White	0.787 (19.9)	0.787 (19.9)	5	30
TIL-6	TIL-6-116C/240F	6-Level-Label, 116/121/127/135/138/143°C	Rectangular	Polyester	Blue/White	2.205 (56.0)	0.787 (19.9)	5	30
TIL-6	TIL-6-149C/300F	6-Level-Label, 149/154/160/166/171/177°C	Rectangular	Polyester	Blue/White	2.205 (56.0)	0.787 (19.9)	5	30
TIL-6	TIL-6-182C/360F	6-Level-Label, 182/188/193/199/204/210°C	Rectangular	Polyester	Blue/White	2.205 (56.0)	0.787 (19.9)	5	30
TIL-6	TIL-6-37C/100F	6-Level-Label, 37/40/43/46/49/54°C	Rectangular	Polyester	Blue/White	2.205 (56.0)	0.787 (19.9)	5	30
TIL-6	TIL-6-60C/140F	6-Level-Label, 60/62/65/71/77/82°C	Rectangular	Polyester	Blue/White	2.205 (56.0)	0.787 (19.9)	5	30
TIL-6	TIL-6-88C/190F	6-Level-Label, 88/93/99/104/107/110°C	Rectangular	Polyester	Blue/White	2.205 (56.0)	0.787 (19.9)	5	30

B-7518 Reversible Temperature-Indicating Labels

Designed to indicate the current exposure temperature. Label indicator fluctuates as the temperature changes.



TIL-7
Thermometer Style



TIL-10 Style



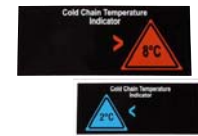
TIL-11 Go/No Go Style



TIL-12 Hot Style



TIL-8 Bar Style



TIL-9 Cold Chain Style

The following parts are available as pre-printed only.

Catalog #	Description	Material	Label Width Inch (mm)	Label Height Inch (mm)	Labels Per Pkg
TIL-7-0C-50C	0C-50C Thermometer	Polyester	0.710 (18.03)	2.000 (50.8)	Box of 250 tags
TIL-7-50C-100C	50C-100C Thermometer	Polyester	0.710 (18.03)	2.000 (50.8)	Box of 250 tags
TIL-8-10C-32C	10C-32C Bar Indicator	Polyester	3.540 (89.92)	0.390 (9.9)	Pack of 5000 labels
TIL-8-1C-12C	1C-12C Bar Indicator	Polyester	3.540 (89.92)	0.390 (9.9)	Pack of 5000 labels
TIL-9-2C-8C	Cold Chain	Polyester	3.780 (96.01)	1.57 (39.9)	Roll of 10000 labels
TIL-10-50C-70C	50C-70C Temp Indicating	Polyester	1.890 (48.01)	2.050 (52.1)	Roll of 10000 labels
TIL-11-43C-DIA	Go or No Go	Polyester	0.940 (23.88) dia.	-	Roll of 500 labels
TIL-12-50C-DIA	Hot Temperature	Polyester	1.460 (37.08) dia.	-	Roll of 250 each